

LE5105 8 /6 CPU

LE5105 LE PLC CPU RS485 RUN/STOP /

CPU RS485 PLC 8 6

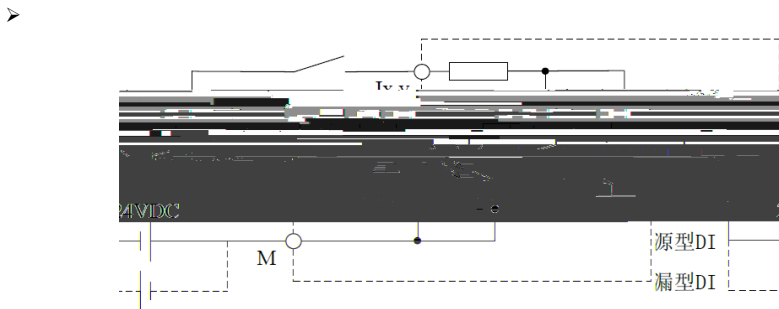
>

CPU			
I/O	8	24VDC	/6
Max.	10		
	LD/ST/CFC/SFC		Max.
	64K		
			100~240VAC
			85~264VAC 50/60Hz
			400mA
			24VDC

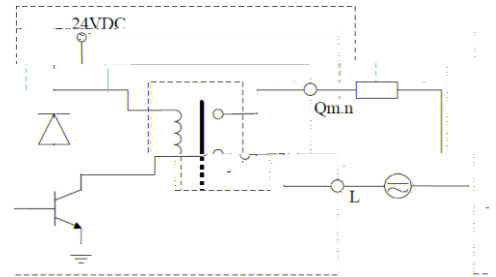
PWR			
lx.y Qm.n			ON
			OFF
RUN/STOP			PLC RUN
			PLC STOP
ERR			PLC
			PLC

LE5105

						L	
						N	
Vout-	24VDC						
Vout+	24VDC				M		
I0.0	1/	1/	1/	A /	I0.1	2/	2/ 2/
I0.2	1	/	/		I0.3	2	/
I0.4	1	/	B /		I0.5	2	/
I0.6					I0.7		
1L	Q0.0	Q0.3					
Q0.0					Q0.1		
Q0.2					Q0.3		
2L	Q0.4	Q0.5					
Q0.4					Q0.5		



LE5105



LE5105

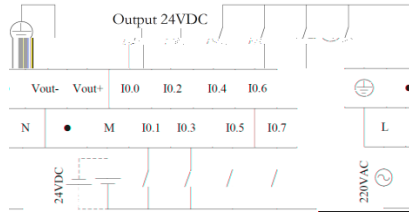


8							
1		3		5	RS485	7	GND
2		4		6	RS485	8	GND

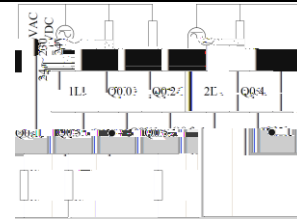


RUN/STOP			
	RUN	RUN	STOP
	STOP	STOP	
	RUN/STOP	STOP	

- PLC PLC
- AutoThink V3.1.0
- AutoThink



LE5105 Upper Terminals Definition and Wiring Diagram

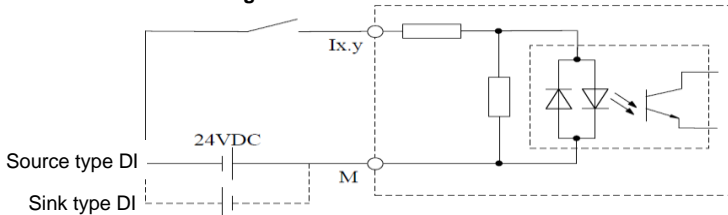


LE5105 Lower Terminals Definition and Wiring Diagram

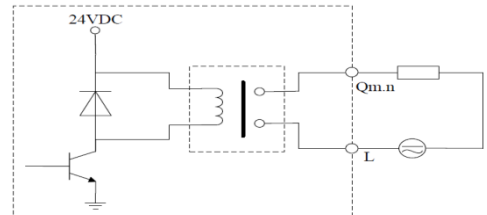
LE5105 Terminal Definition

Terminal Identification	Description	Terminal Identification	Description
⊕	Grounding	L	Fire wire
	No connection	N	Null line
Vout-	Output 24VDC negative		No connection
Vout+	Output 24VDC positive	M	Common of input
I0.0	Fast external interruption 1/ Pulse catch 1/ single-phase counter 1/ A/B phase counter phase A / Ordinary input	I0.1	Fast external interruption 2/ pulse catch 2/ single-phase counter 2/ Ordinary input
I0.2	Single-phase counter 1 reset / A/B phase counter reset / Ordinary input	I0.3	Single-phase counter 2 reset / Ordinary input
I0.4	Single-phase counter 1 direction control / A/B counter phase B/ Ordinary input	I0.5	Single-phase counter 2 direction control / Ordinary input
I0.6	Ordinary input	I0.7	Ordinary input
1L	Common of Output Q0.0 Q0.3		No connection
Q0.0	Ordinary output	Q0.1	Ordinary output
Q0.2	Ordinary output	Q0.3	Ordinary output
2L	Common of output (Q0.4 Q0.5)		No connection
Q0.4	Ordinary output	Q0.5	Ordinary output

Electrical Schematic Diagram



Electrical Schematic Diagram of LE5105 Input



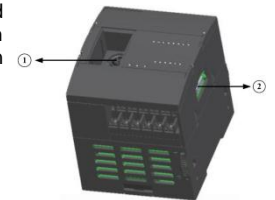
Electrical Schematic Diagram of LE5105 Output

Communication Interface

RS485 communication interface can establish connection to personal computer (PC) through programming cable, realize download of user program and on-line debugging and be applied to communication with field devices. Junction and communication between LE5105 CPU module and upper computer are achieved through PS/2 of LE5105 (at ① in the figure), junction and communication between LE5105 CPU module and expansion module are achieved through connector (at ② in the figure).

Definition of PS/2

Pin No.	Definition	Pin No.	Definition	Pin No.	Definition	Pin No.	Definition
1	—	3	—	5	RS485+	7	System GND
2	—	4	—	6	RS485-	8	System GND



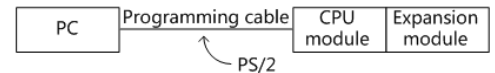
Software Configuration

e software and hardware are constrained each other.

RUN/STOP selective switch position	Status of programming software	Module status
Run (Switch to upper position)	RUN	RUN: Automatically changed into STOP if users download program in this state.
	STOP	STOP
Stop (Switch to lower position)	RUN/STOP	STOP(user's program stops, unable to run)

Communication Connection

- Before downloading, please confirm that PLC is connected as per the schematic diagram. Please use HollySys PLC programming cable to download the program.
- Before downloading, please confirm that AutoThink V3.1.0 or above version has been installed.



Caution:

- Cover of the terminal should be fastened properly prior to power on of the PLC system to avoid unnecessary personal injury or device damage.
- When connecting or removing PLC power, severe personal injury or device damage may be caused if power is not isolated. Therefore, before module installation or removal, all power must be turned off and please pay attention to this at any time.
- Before connecting power to PLC, please confirm programming cable is connected properly and please do not remove from or insert into communication port during power on to avoid device damage.
- If the equipment is used in a manner not specified by the manufacturer, the protection provided by the equipment may be impaired.

Warning symbol for high voltage, please do not touch equipment with the warning symbol, operation in electricity is strictly prohibited.

Fault Diagnosis

System assign diagnostic zone with corresponding byte to each module and save detailed diagnostic information of each module. When module faults detected the diagnostic information will be reported and saved into the user configurable variables for future query and analysis purposes. Please refer to Data Storage Area in Chapter 5 of AutoThink V3.1 User Manual_Project Configuration for more details.